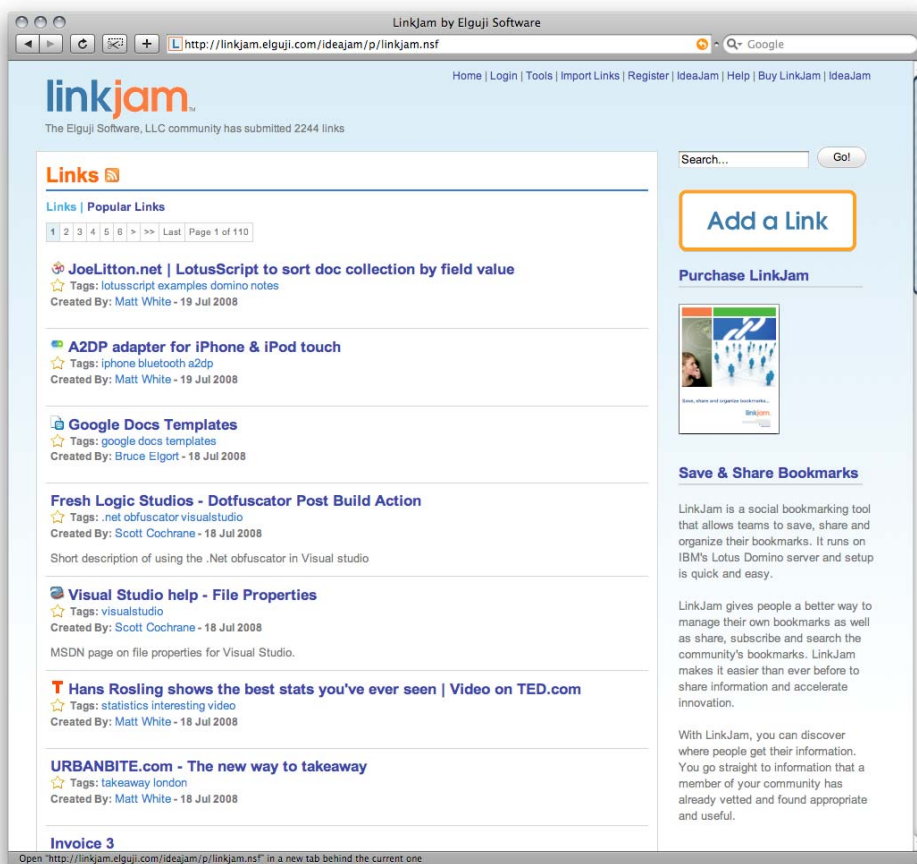




Installation, Setup and Customization



Copyright

© 2008 Elguji Software, LLC. All rights reserved.



If this guide is distributed with software that includes an end user agreement, this guide, as well as the software described in it, is furnished under license and may be used or copied only in accordance with the terms of such license. Except as permitted by any such license, no part of this guide may be reproduced, stored in a retrieval system, or transmitted, in any form or by any means, electronic, mechanical, recording, or otherwise, without the prior written permission of Elguji Software, LLC. Please note that the content in this guide is protected under copyright law even if it is not distributed with software that includes an end user license agreement.

The content of this guide is furnished for informational use only, is subject to change without notice, and should not be construed as a commitment by Elguji Software, LLC. Elguji Software, LLC assumes no responsibility or liability for any errors or inaccuracies that may appear in the informational content contained in this guide.

IdeaJam and LinkJam are trademarks of Elguji Software, LLC, 10914 NE 101st St., Vancouver, WA 98662.

IBM Lotus Notes and IBM Lotus Domino are trademarks of International Business Machines Corporation in the United States and/or in other countries.

All other trademarks are the property of their respective owners.

Document Revision History

Version	Date	Description
1.0	July 31, 2008	Original Publication

Table of Contents

Copyright.....	2
Document Revision History.....	3
Table of Contents.....	4
Introduction	6
Before you get started with your installation Prior to installing and configuring your LinkJam there are few things you will need to have:.....	6
Installation	6
Selecting an IBM Lotus Domino server.....	6
Place the templates on the IBM Lotus Domino server.....	6
Sign the database template	7
Create the databases	7
Enable full text search on the LinkJam system database	7
Configure the database Access Control List (ACL).....	7
The LinkJam database Access Control List.....	7
ACL Roles.....	8
Configuring the LinkJam database.....	8
General Settings.....	9
Welcome Text	12
System Text.....	12
Help Page Text	12
Hosting Text	12
Footer Text.....	12
Error Message Text	12
Registration Details.....	12
System Graphics.....	13
Agent Configuration.....	13
Customizing the Login, Change Password and Error Forms	14
Verifying that your LinkJam system is running correctly.....	14

Troubleshooting	16
Registration	16
Agents	16
User Interface	16
Customizing LinkJam	16
Modifying the Language Document	16
Modifying the Style Sheet.....	18
Administering LinkJam	20
Views	20
Configuration	20
Administration	21
Tools	21

These instructions apply to both the evaluation and commercial versions of LinkJam. The evaluation version of LinkJam should only be used for demonstration and evaluation purposes. The evaluation version is limited to fifty links and the database design is hidden.

Introduction

Getting LinkJam up and running is an easy process. By following these instructions you should have your system up and running in no time. If you run into problems please let us know as we want to ensure that our software meets and/or exceeds your expectations.

Before you get started with your installation

Prior to installing and configuring your LinkJam there are few things you will need to have:

1. First and foremost a licensed copy of LinkJam
2. A server running IBM Lotus Domino server V6.5.x or greater
3. Access to these installation instructions

Installation

Here is a summary of the steps that you will need to install and setup LinkJam:

1. Select a Domino Server for the installation
2. Place the template on the IBM Lotus Domino server
3. Sign the database template
4. Create the LinkJam database from the template
5. Enable full text index on the database
6. Configure the database access control lists
7. Configure the LinkJam system via the LinkJam Control Panel
8. Configure database agents
9. Customize the Login, Change Password and Error Forms in your domcfg.nsf
10. Verify your system configuration

Selecting an IBM Lotus Domino server

Identify the IBM Lotus Domino Server that you will be installing LinkJam onto. This server should be running Domino 6.5.x or higher. LinkJam runs on IBM Lotus Domino 6.5.x, 7.x and 8.x.

Place the templates on the IBM Lotus Domino server

Copy the LinkJam Database Template to the Domino server. We encourage you to work with

your Domino Administration staff to ensure that the templates get placed into the proper location.

Sign the database template

Sign the database template with the appropriate ID that has the rights to run **restricted agents** on the server. We again encourage you to work with your Domino Administration staff to ensure that the templates get placed into the proper location.

Create the databases

Create a new databases from the LnkJam template on the Domino Server. Be sure to check the "Show Advanced Templates" from the File > Application (Database) > New dialog box.

Enable full text search on the LinkJam system database

LinkJam has a search feature that requires that the database be full text indexed. Be sure and enable full text searching via the database properties.

Configure the database Access Control List (ACL)

Add the "DenyNotesAccess" role to IBM Lotus Notes users for whom you don't want to access the LinkJam database from the Notes client. This will typically be everybody except for the LinkJam Administrator.

The LinkJam database Access Control List

Anonymous Browsing

This setup would be for a public internet/intranet site where anonymous users can browse the site but not add, copy and/or delete links:

- **Default** - Reader / Read / Write Public Documents
- **Anonymous** - Reader / Read / Write Public Documents
- **User Group** (e.g. LinkJam Users) - Author (Create Documents) / Read / Write Public Documents
- **Admin Group** (e.g. LinkJam Administrators) - Manager (Delete Documents)

No Anonymous Browsing

This setup would be for a private internet/intranet site where a username and password are required to do anything in the LinkJam system.

- **Default** - Reader / Read / Write Public Documents
- **Anonymous** - No Access / Read / Write Public Documents
- **User Group** (e.g. LinkJam Users) - Author (Create Documents) / Read / Write Public Documents

- **Admin Group** (e.g. LinkJam Administrators) - Manager (Delete Documents)

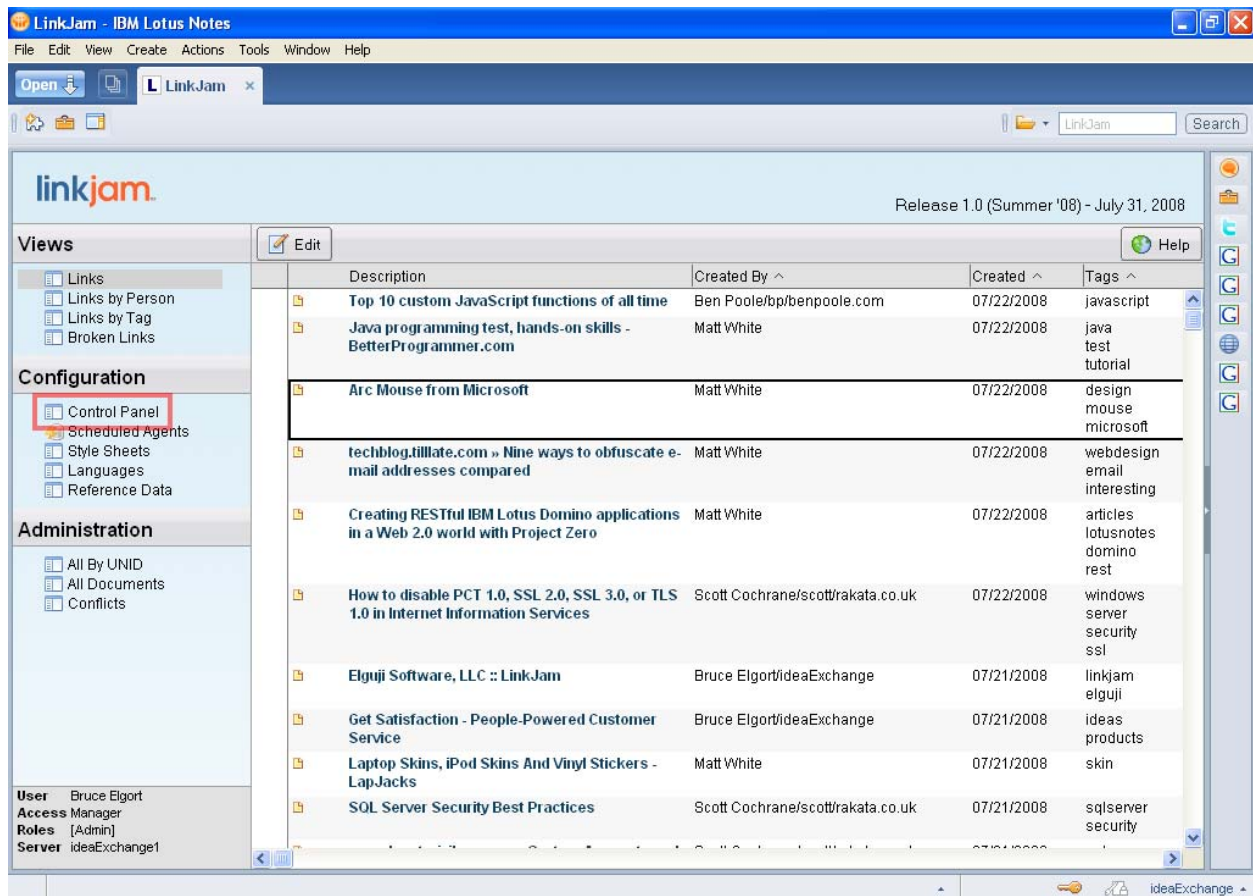
ACL Roles

To prevent access for non administrators to the Notes client, add the 'DenyNotesAccess' role to all groups other than administrators.

Grant the “User” role to the people and/or groups that will be using LinkJam. Grant the LinkJam Administrator the “Admin” role.

Configuring the LinkJam database

Next you will need to configure LinkJam using the Control Panel.



The Control Panel has several tabs that contain configuration information. The General Settings tab is the one that is most important and contains the core LinkJam functionality. The settings on the other tabs are optional.

Start by following the steps in the General Settings tab and work your way through each tab.

- General Settings
- Welcome Text

- System Text
- News Text
- Help Page Text
- Hosting Text
- Footer Text
- Error Message Text
- Registration Details
- Comment Notification
- Google Analytics
- Google AdSense
- System Graphics

General Settings

The General Settings can be found on the Control Panel document in the main LinkJam database.

The screenshot shows the 'General Settings' tab in the LinkJam Control Panel. The window title is 'LinkJam by Elguji Software - Control Panel - IBM Lotus Notes'. The interface includes a menu bar (File, Edit, View, Create, Actions, Text, Tools, Window, Help) and a toolbar with 'Open', 'Save', and 'Close' buttons. The main content area is titled 'General Settings' and contains the following settings:

- System Name:** LinkJam by Elguji Software
- Host Name:** linkjam.elguji.com
- Integrated With IdeaJam?** Yes (selected), No
- IdeaJam Main Database Path:** ideajam\pluj.nsf (Must be in same domain as LinkJam)
- Enable Right Menu Tag Cloud:** Yes (selected), No
- Starting Point for Tag Filter:** 5 (selected), 1 (Fewest), 2, 3, 4, 6 (Most)
- How many times must a tag appear before it is used in the Tag Cloud?** 3 (selected), 1, 2, 4, 5, 6, 7
- How many times must a tag appear for a person before it is used in their Tag Cloud?** 1 (selected), 2, 3, 4, 5, 6, 7
- Enable Registration System:** Yes (selected), No; Issue Server Console Commands to Allow Immediate Login (checked)
- Home Header Link:** Home (with a 'Generate Default Home Link' button)
- Extra Header Links:** Buy LinkJam

The bottom right corner of the window shows the 'IdeaExchange' logo.

This tab can be used to control the following settings:

System Name

By default this is 'LinkJam' and it will appear on all page headers, and pretty much anywhere that the system is referenced such as section headings, RSS feeds, Emails etc.

Host Name

This setting is used mainly by the system generated emails to build correct URLs. The hostname should be entered without any prefix or suffix, so for the public LinkJam site the value would be 'linkjam.elguji.com'

IdeaJam Integration

If you have purchased Elguji's IdeaJam product you can integrate LinkJam and IdeaJam to work together. This setting is set to "No" by default. Enable it if you want LinkJam/IdeaJam integration.

IdeaJam Main Database Path

If you are integrating LinkJam with IdeaJam enter the path to the IdeaJam database.

Enable Right Menu Tag Cloud in Sidebar

When you are browsing links on the LinkJam site, you'll notice a block on the right which shows the tag cloud. This field allows you to enable or disable it and should be left on at all times.

Starting Point for Tag Cloud

This setting offers you the ability to control the size and position of the LinkJam tag cloud and tag cloud slider that appears in the right side navigator. Select from 1, 2, 3, 4, 5 or 6 where 1 shows the fewest tags and 6 shows all tags.

How Many Times Must a Tag Appear Before it is Used in the Tag Cloud?

This setting allows you to control when a tag will show up in the main tag cloud. Select a number from 1 – 7. Selecting 1 will show tags for all links.

How Many Times Must a Tag Appear for a Person Before it is Used in Their Tag Cloud?

This setting allows you to control when a tag will show up in a users "private" tag cloud. Select a number from 1 – 7. Selecting 1 will show tags for all links.

Enable Registration System

If you are running your LinkJam site on the internet then you might want to allow your users to register themselves rather than you doing it for them. Or if the site is run on an intranet where users are already registered you will not need the registration option, this field allows you to enable or disable the Registration link in the header menu and the Login screen.

Home Header Link in Menu

You can override the default home link (which takes users back to the front page of the LinkJam site) and point them back to your intranet page or somewhere else. To revert to the default value, click the “Default Home Link” button.

Extra Header Links

Here you can create your own links which will appear on the right hand side of the header bar. By Default this is blank, but on the public site we have, for example, added the link to the IdeaJam blog. The format for the field is to enter each link on a new line using HTML. So we have one link in this format: `Blog`

Select Style Sheet

LinkJam runs using a simple style sheet. With the StyleSheet you can completely change the look and feel of the site without having to change the application design. By default we provide one Style Sheet but if you want to create your own, you can select it here.

Select Language for Labels

LinkJam is multi-lingual. All labels on the site are fully configurable; here you can select the language which you would like to use.

Text Editor

LinkJam supports three different styles of text editing when creating a new idea. At the most basic level there is plain text. If you choose this option the user will be presented with an old style textarea to enter their idea details. This will not allow any formatting.

A much better option is to use the FCKEditor which is a free rich text editor which works across all of the major browsers. For instructions on how to set it up on your server go here.

Database Path for Names

If registration is enabled, this is the database where new person documents will be created.

Database Path for Main NAB

If registration is enabled, this is the database where the user groups will be maintained.

Database Path for Error Logs

The system will log errors to an OpenNTF OpenLog database if any problems occur. If this field is left blank no logs will be written. Elguji Software, LLC highly encourages its customers to use OpenLog.

Temporary File Location

Specify an operating system file location which LinkJam should use to read and write temporary files.

Welcome Text

This is a block of text which will appear on the right hand side of the screen for unauthenticated users. You can enter whatever HTML formatted text you would like here.

System Text

This text appears above the Welcome Text on the right hand side of the screen. It always shows in all views.

News Text

It appears above the list of Ideas in all views and can be used to notify users of downtime or important information.

Help Page Text

You have full control over what is displayed in the Help Page. By default we give instructions on how to use the LinkJam but you can enter anything you like such as support numbers or other specific information.

Hosting Text

If the LinkJam site is being hosted on the internet then you might want to display hosting information here. Otherwise it is another block on the right of the screen which can be used to provide static information to your users.

Footer Text

Normally the footer text will contain copyright information, but it is fully configurable and can be used for any other purpose. It appears at the bottom of every page of the IdeaJam site.

Error Message Text

If an error occurs, such as an invalid URL then this page will be displayed. Normally the message would be configured with instructions on how to deal with the error, such as the help desk number.

Registration Details

If registration is enabled (see General Settings) then you can configure the registration email settings from this tab. There are two reserved pieces of text which will be personalized when an email is sent by the system.

@FirstName@ will be translated into the First Name of the person registering.

@UserAddress@ will be translated into the Email Address that the person used to register (which is also their username).

System Graphics

By default your LinkJam site offers the capability to change some of the main site graphics. These include:

- The Logo
- The “Add a Link” image
- The background image
- The 'favicon' that appears in the address bar of web browsers.

If you change any image, it's important to attach the image, but also to make sure that the File Name field for the image is also updated to reflect the change.

Agent Configuration

LinkJam uses several agents that need to be configured.

The screenshot shows the LinkJam application running in an IBM Lotus Notes environment. The interface includes a menu bar (File, Edit, View, Create, Actions, Tools, Window, Help), a toolbar, and a main content area. On the left, there is a navigation pane with sections for Views, Configuration, and Administration. The 'Configuration' section is expanded, and 'Scheduled Agents' is highlighted with a red box. The main content area displays a table of links with columns for Description, Created By, Created, and Tags. The table contains several entries, including 'Top 10 custom JavaScript functions of all time', 'Java programming test, hands-on skills - BetterProgrammer.com', 'Arc Mouse from Microsoft', 'techblog.tilllate.com » Nine ways to obfuscate e-mail addresses compared', 'Creating RESTful IBM Lotus Domino applications in a Web 2.0 world with Project Zero', 'How to disable PCT 1.0, SSL 2.0, SSL 3.0, or TLS 1.0 in Internet Information Services', 'Elguji Software, LLC :: LinkJam', 'Get Satisfaction - People-Powered Customer Service', 'Laptop Skins, iPod Skins And Vinyl Stickers - LapJacks', and 'SQL Server Security Best Practices'. The status bar at the bottom indicates the user is Bruce Elgort, an Access Manager with Admin roles, and the server is ideaExchange1.

In the LinkJam database select Configuration > Scheduled Agents. This will open up a form where you can set options for the agents.

Make sure the following agents are enabled, the schedule can be changed to meet requirements, but the default settings are recommended. Also be sure to set the Domino server that these agents will run on:

- Maintain Cached Data
- Maintain Personal Tag Clouds
- Maintain Link Icons
- Maintain Multi Link Counts

Customizing the Login, Change Password and Error Forms

To complete your LinkJam installation we recommend that you configure your domcfg.nsf database to use the LinkJam supplied Login and/or Change Password forms. We encourage you to work with your Domino Administration staff prior to modifying the Domino Configuration database.

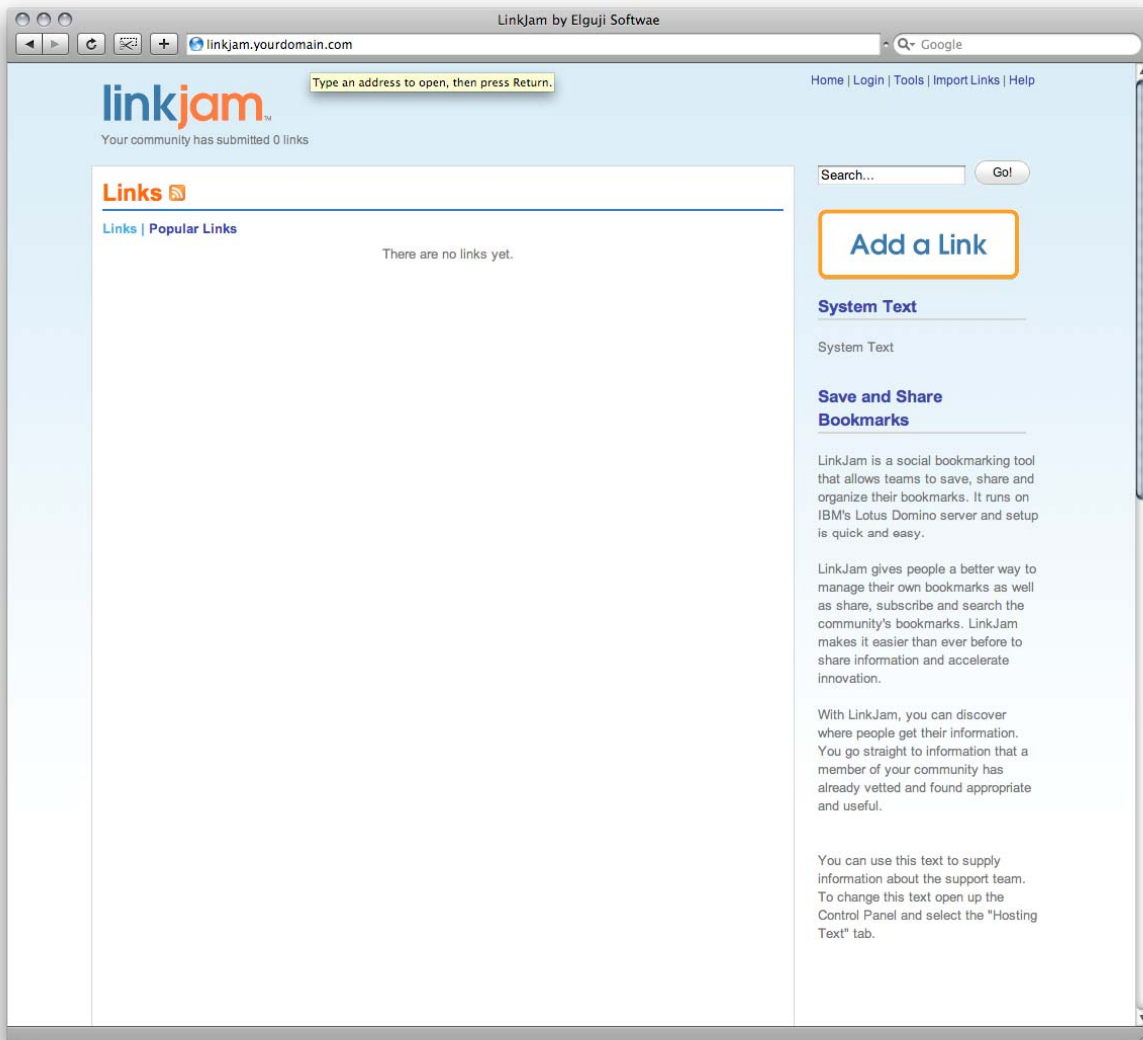
LinkJam requires that Session Authentication be enabled on your server for the LinkJam site. Set up Login / Error / Change Password form mappings in your DomCfg.nsf database.

- Create a LoginForm mapping pointing to a form called '\$\$LoginieForm' in the LinkJam database
- Create an ErrorForm mapping pointing to a form called '\$\$ReturnGeneralError' in the LinkJam database
- Create a ChangePasswordForm mapping pointing to a form called '\$\$CustomChangePasswordForm' in the LinkJam database

Verifying that your LinkJam system is running correctly

Once you have completed installing LinkJam you can verify that the system is operating correctly. To verify your configuration follow these steps:

- Launch LinkJam in your browser and login if necessary.
- If the site is configured correctly you should see something like this:



- Add a Link and ensure that the link gets added to LinkJam
- Ensure that the tag clouds are generated (may take up to an hour for agents to run and build clouds).
- Perform a search to ensure that the database has been full text indexed
- Import your bookmarks from Internet Explorer, Firefox, Safari or del.icio.us. Verify that they were imported successfully.
- If you enabled the Registration option in the Control Panel register a new user to see that the registration process is working. Once created try to login as the new user.

Troubleshooting

If your LinkJam isn't working quite right here are a few things you can try.

Registration

- If you are unable to register a new user verify that the information entered in the General Settings tab of the LinkJam Control Panel is correct. Ensure that the address books specified are correct.
- From the IBM Lotus Notes LinkJam client access the Configuration > Scheduled Agents section and check each agent to ensure that they are enabled and set to run on the appropriate server.

Agents

- If you are seeing error messages on the IBM Lotus Domino console you should check that the agents are setup correctly. From the IBM Lotus Notes LinkJam client access the Configuration > Scheduled Agents section and check each agent to ensure that they are enabled and set to run on the appropriate server.

User Interface

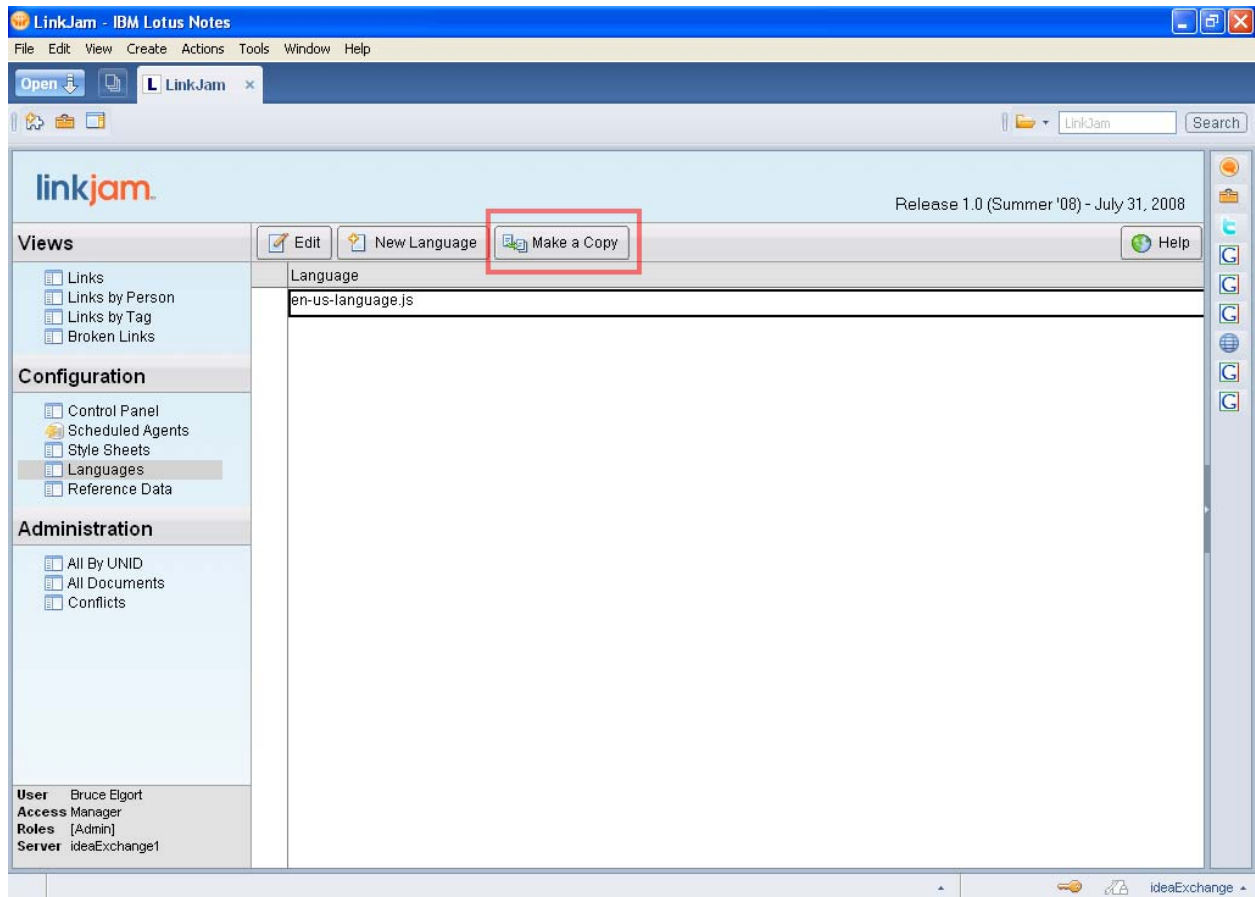
- The site doesn't appear to be loading the Cascading Style Sheets and doesn't look quite right on the web. To resolve this problem check the database ACL's of the main LinkJam database and ensure that the settings are correct.

Customizing LinkJam

Modifying the Language Document

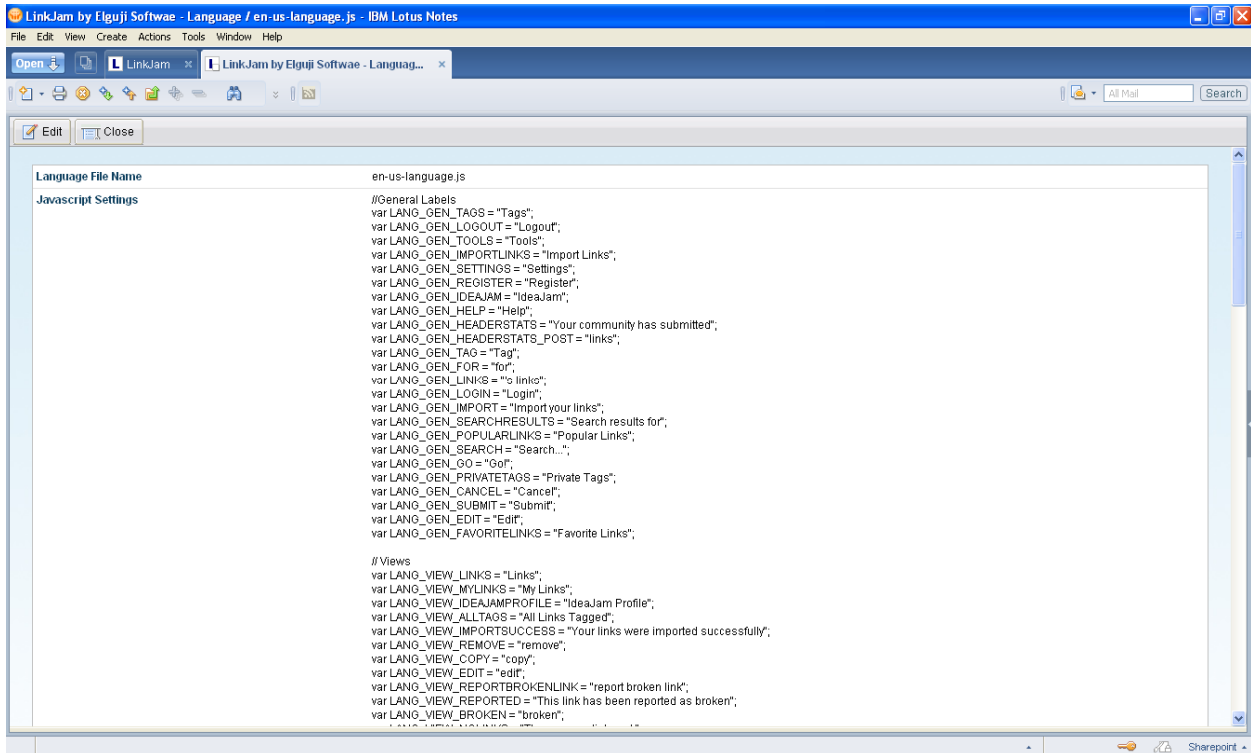
The Language document controls the text strings used in LinkJam. Prior to making any changes we encourage that you make a backup copy of the language document by clicking on the "Make a Copy" button. You should also take great care in modifying this document as it is important that this document not be reformatted in anyway.

Be sure and modify the correct language document as your LinkJam software may include language documents for other languages.



The language document is divided into various sections:

- General Labels
- Views
- Forms
- Settings
- Buttons
- Login Screen
- Register Screen
- Search Results



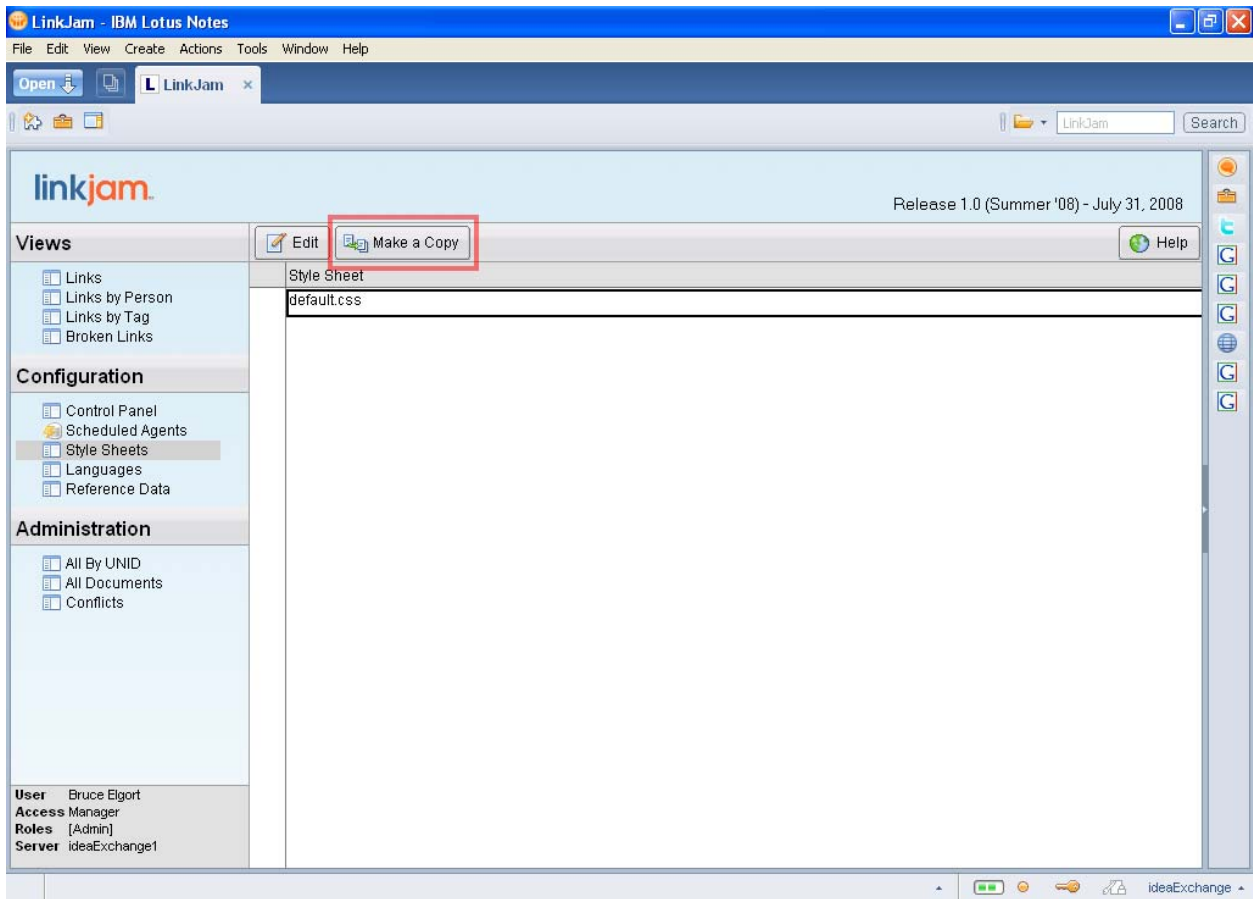
```
Language File Name      en-us-language.js
Javascript Settings
//General Labels
var LANG_GEN_TAGS = "Tags";
var LANG_GEN_LOGOUT = "Logout";
var LANG_GEN_TOOLS = "Tools";
var LANG_GEN_IMPORTLINKS = "Import Links";
var LANG_GEN_SETTINGS = "Settings";
var LANG_GEN_REGISTER = "Register";
var LANG_GEN_IDEAJAM = "IdeaJam";
var LANG_GEN_HELP = "Help";
var LANG_GEN_HEADERSTATS = "Your community has submitted";
var LANG_GEN_HEADERSTATS_POST = "links";
var LANG_GEN_TAG = "Tag";
var LANG_GEN_FOR = "for";
var LANG_GEN_LINKS = "to links";
var LANG_GEN_LOGIN = "Login";
var LANG_GEN_IMPORT = "Import your links";
var LANG_GEN_SEARCHRESULTS = "Search results for";
var LANG_GEN_POPULARLINKS = "Popular Links";
var LANG_GEN_SEARCH = "Search...";
var LANG_GEN_GO = "Go!";
var LANG_GEN_PRIVATETAGS = "Private Tags";
var LANG_GEN_CANCEL = "Cancel";
var LANG_GEN_SUBMIT = "Submit";
var LANG_GEN_EDIT = "Edit";
var LANG_GEN_FAVORITELINKS = "Favorite Links";

// Views
var LANG_VIEW_LINKS = "Links";
var LANG_VIEW_MYLINKS = "My Links";
var LANG_VIEW_IDEAJAMPROFILE = "IdeaJam Profile";
var LANG_VIEW_ALLTAGS = "All Links Tagged";
var LANG_VIEW_IMPORTSUCCESS = "Your links were imported successfully";
var LANG_VIEW_REMOVE = "remove";
var LANG_VIEW_COPY = "copy";
var LANG_VIEW_EDIT = "edit";
var LANG_VIEW_REPORTBROKENLINK = "report broken link";
var LANG_VIEW_REPORTED = "This link has been reported as broken";
var LANG_VIEW_BROKEN = "broken";
```

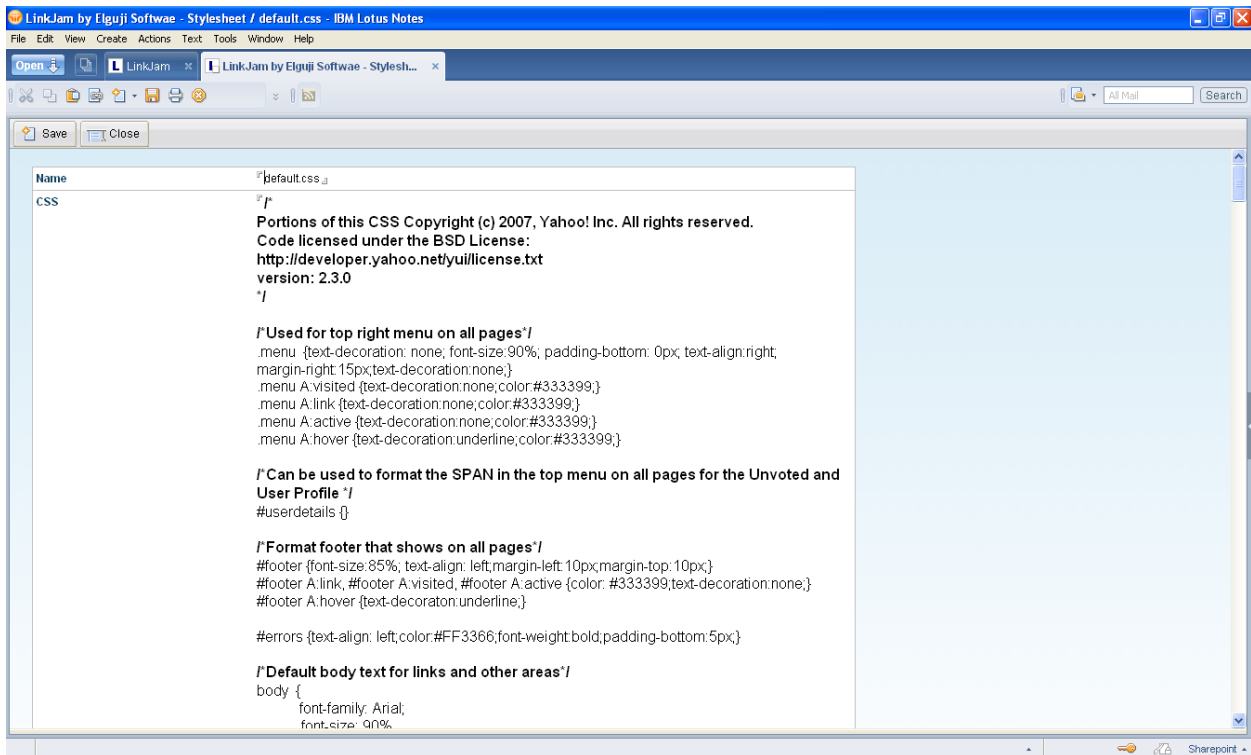
Simply modify the text for each label. Be sure to precede double quote marks with a \. This is very important. If you find that after you modify this document that your LinkJam is not working correctly check to ensure that all strings are terminated correctly.

Modifying the Style Sheet

A style sheet located in the Configuration section of LinkJam IBM Lotus Notes client is where you can go to make changes to fonts, colors, text-spacing and other items that control the look and feel of your LinkJam site. Prior to making any changes it is recommended that you make a backup copy of the style sheet by clicking the “Make a Copy” button.



It is highly recommended that you have a good understanding of Cascading Style Sheets (CSS) prior to making any changes.



Administering LinkJam

Management and configuration of the LinkJam system is performed from the IBM Lotus Notes client. This section will review the features available and how they are used.

On the left hand side of the client you will see several sections – Views, Configuration, Administration and Tools.

Views

This section contains several views:

- Links
- Links by Person
- Links by Tag
- Broken Links

Configuration

This section is used to configure the LinkJam system.

- **Control Panel** – used to configure the core features and functions
- **Scheduled Agents** – used to configure the scheduled agents
- **Style Sheets** – used to manage the look and feel

- **Languages** – used to manage the text labels and other text used within the system
- **Reference Data** – This view shows the reference data documents used by LinkJam to store information used throughout the system

Administration

This section is used to look at the details of data within LinkJam and is provided for troubleshooting purposes only.

- **All by UNID** – shows all documents within the system by their UNID
- **All Documents** – shows all documents categorized by form name
- **Conflicts** – used to show any replication/save conflicts in the system

Tools

LinkJam has several agents that can assist you with:

- Deleting a user
- Fixing Authors
- Fixing Tags
- Refresh Link Icons

Highlight the documents in the Links view that you want to work with and then select an agent from the Actions menu. Please contact the LinkJam Support team prior to running these agents.